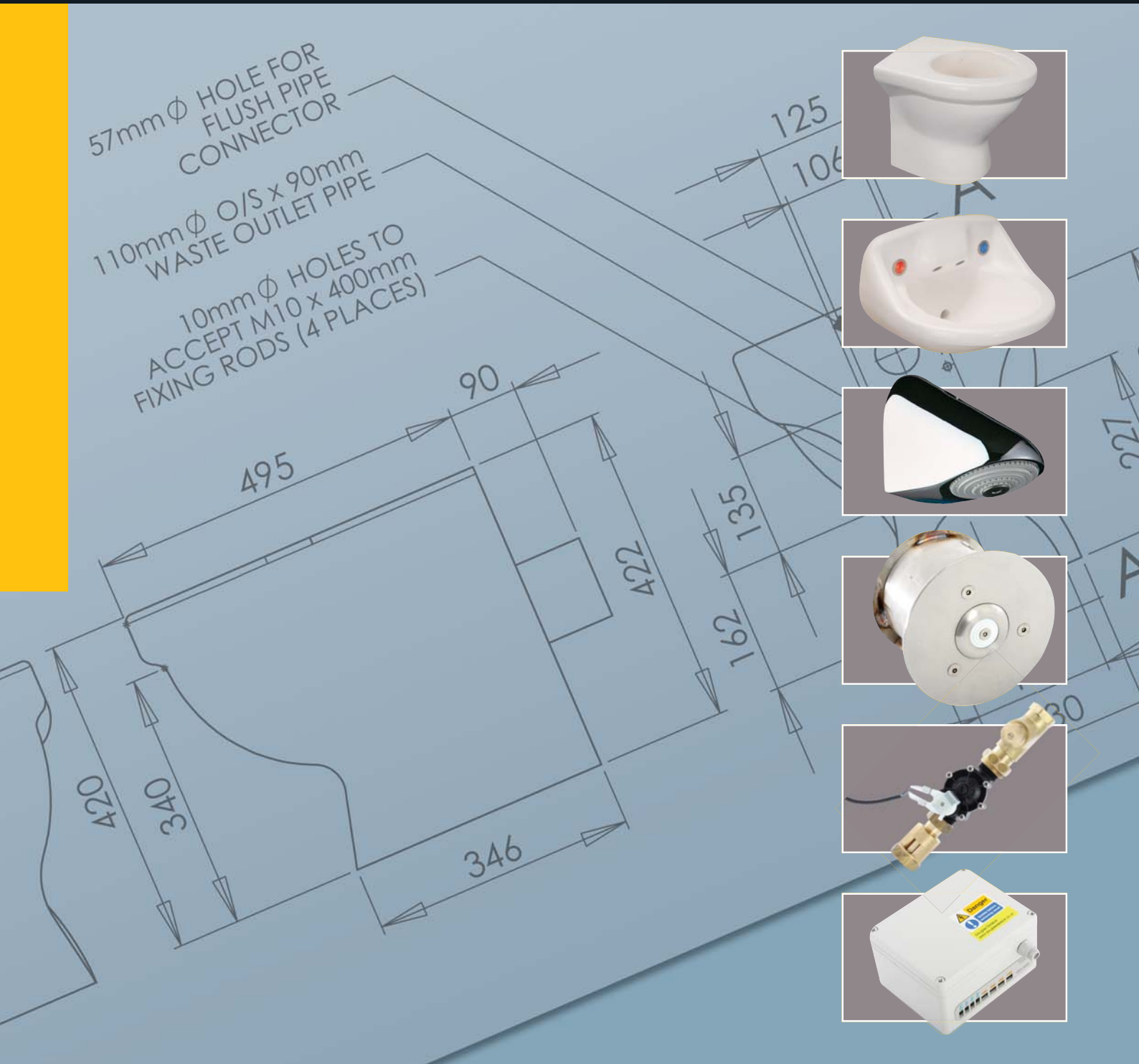


In partnership with
VRSG & Douglas Delabie



specialist sanitaryware



CONTENTS

WORKING IN PARTNERSHIP	03
ELECTRONIC, PNEUMATIC AND PIR WASHROOM CONTROLS	03
VRSG	04
DOUGLAS DELABIE	06
A GUIDE TO TYPICAL CELL LAYOUTS	08
INSTALLATION OVERVIEW	10
OTHER APPLICATIONS	12
CONTACTS	14



WORKING IN PARTNERSHIP

VRSG have spent years developing and adhering to the many guidelines and requirements specified by the Home Office and NHS to develop this new and comprehensive range of sanitaryware in a white polymer that has a more domestic appearance. These products have been installed into Prisons, Secure Units, Hospitals and even night clubs in the UK.

This Unique Range is now available exclusively through Plumb Center

Gone are the days of waiting for 6 to 8 weeks for delivery

Sanitaryware will be available within 48 hours from receipt of order

Only Plumb Center can now provide this unique service for the construction industry

Provides Strength Security & Hygiene

All the products are made from high quality resins

A perfect alternative to other existing institutional-looking products

Virtually Unbreakable

Zero Fire Rating

Stain and Chemical Resistant

Easy To Clean

WRAS Approved

ELECTRONIC, PNEUMATIC AND PIR WASHROOM CONTROLS SOLUTIONS FOR HIGH SECURITY ENVIRONMENTS

To complement the Sanitaryware range Plumb Center have also partnered with Douglas Delabie, a market-leading manufacturer in the commercial sanitary fittings industry and a preferred supplier to the prison and secure accommodation sector.

Douglas Delabie is driven by innovation and a determination to develop state-of-the-art water control products that meet or exceed the exacting demands of today's commercial applications. With the UK's largest range of high-quality anti-ligature water control products that not only reduce incidents of self-harm and vandalism, they deliver long-term water savings to ongoing water consumption, protect the environment and prevent the spread of cross-contamination infections.

Douglas Delabie's anti-ligature products comply with the Safer Cell Framework Agreement, and guarantee excellence in all aspects of their business operations, including research & development, design, manufacturing and after-sales service.

ANTI-VANDAL / ANTI-LIGATURE SPECIALIST SANITARYWARE

Several years ago the Vandal Resistant Sanitaryware Group (VRSG) identified a need and an ever increasing demand for a new concept in anti-ligature and anti-vandal sanitaryware to be made available in the UK.

The new range provided a less institutionalised and more aesthetically pleasing product than existing sanitaryware products, that would not only be suitable for prisons and the secure market but also anywhere that could be open to vandalism.



Basin and WC shown. Shower tray options also available.

VRSG Vandal Resistant Basins are designed for installation with either pneumatic non concussive taps, electronic or PIR taps manufactured by Douglas Delabie.

To make ordering easier for you the customer we have created single part numbers that incorporate both the basin and the relevant taps.

	<p>VRSG white polymer, anti-ligature, anti-vandal WC pan</p>	<p>VRSG white polymer, anti-ligature, anti-vandal classic hand wash basin</p>
	<p>VRSG white polymer, anti-ligature, anti-vandal corner WC pan</p> <p>RH corner shown</p>	<p>VRSG white polymer, anti-ligature, anti-vandal shelf unit</p>
	<p>VRSG white polymer, anti-ligature, anti-vandal space saver hand wash basin</p>	<p>VRSG white polymer, anti-ligature, anti-vandal mirror</p>

	Application	Pack Code	Description	Includes
Space Saver	Pneumatic	B91008	395mm Basin with pneumatic non concussive controls	(B91006) basin with (C16537) hot & cold pneumatic controls
	Electronic	B91009	395mm Basin with electronic touch pad controls	(B91006) basin with 2 x (C16542) electronic touch pad controls
	PIR	B91012	395mm Basin with PIR controls	(B91006) basin with 2 x (C16555) PIR controls
Standard	Pneumatic	B91010	470mm Basin with PIR controls	(B91007) basin with (C16537) hot & cold pneumatic controls
	Electronic	B91011	470mm Basin with electronic touch pad controls	(B91007) basin with 2 x (C16542) electronic touch pad controls
	PIR	B91013	470mm Basin with PIR controls	(B91007) basin with 2 x (C16555) PIR controls

PIR = Passive Infra-Red

When using the Electronic Touch Pad Controls a 4 way 230/12volt control box must be used (8 way control box now available). The control box is a 4 way controller. This means it can control up to four items, Washbasins (Hot & Cold counts as 2) WC flushing (Dual counts as 1) and shower controls.

WASHROOM CONTROLS

Douglas Delabie's designers and engineers are constantly working to help our customers to combat vandalism or incidents of self-harm by innovating and refining products to meet the rigours and requirements of a secure accommodation washroom.

Designed with durability and robustness in mind, the hard-wearing chrome-plated or stainless steel finish resists damage, and reinforced fixings and shock-proof mechanisms are tested to over 500,000 operations.

- Durable
- Robust
- Hard-Wearing

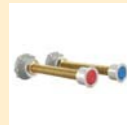
Other safety features include, recessed ligature-free fixings and anti-blocking devices, which only allow taps to run after the push button is released.

Pneumatic Washroom Control Options

Douglas Delabie's pneumatic-based flow controls are the ideal washroom solution within prison inmate areas to provide a safe, user friendly and anti-ligature control for showers, wash basins and WCs installed in individual cells offering effective water control.

Features

- A safe anti-scald water temperature is provided by a TMV3 thermostatic mixing valve (not featured) which is mounted in the service duct as part of a pre-fabricated manifold assembly. It has been independently tested and certified under the NHS Estates Model Engineering specification D08, and is also TMV3 approved.
- The double cell thermostatic manifold solution provides cold water to wash basins and WCs installed in individual cells and safe, blended (via a TMV3 mixing valve not featured) hot water to individual cell wash basins. The inlet connections are 22mm push-fit and the manifold outlet connections are 15mm push fit.
- Time flow operation is provided by the Douglas Delabie Secureflow pneumatic time flow control system, providing anti-ligature control in each cell with a safe hot and cold water supply to the washbasin, and non-potable cold water to the WC.



Basin Control C16537

- In-cell touch pads mounted in anti-ligature housings provide time flow controlled use of blended hot and cold water
- Flow is regulated at 6 litres per min, pre-set operational timing of 10-12 seconds
- Housings are suitable for 'through the wall' applications with a wall thickness of up to 195mm
- Anti-ligature fittings have a durable stainless steel or colour anodised finish



Shower Control C16538

- In-cell touch pads provide time flow controlled use of blended hot water. Options for stainless steel or colour anodised finish
- Flow is regulated at between 6 litres per min, pre-set operational timing of 30 seconds
- Anti-scald failsafe if cold water supply is lost (via TMV3 valve not featured)
- Housings for push buttons are suitable for 'through the wall' applications with a wall thickness of up to 195mm
- Anti-ligature fittings have a durable stainless steel/laser-etched finish



Dual Flush WC Control C16539 (Single Flush C16540)

- Two separate in cell push buttons mounted in anti-ligature housings provide a time flow controlled short or full flush
- Short Flush flow is regulated at 3 litres, full flush flow is 6 litres
- Housings are suitable for 'through the wall' applications with a wall thickness of up to 195mm
- Anti-ligature fittings have a durable stainless steel/laser-etched finish

Infrared Washroom Control Options

Features

- No – Touch Activation – Hygienic
- Avoids transference of bacteria and germs
- Suitable for less the abled



Basin control C16555

- In-cell sensors mounted in anti-ligature housings provide time flow controlled use of blended hot and cold water
- Flow is regulated at 6 litres per minutes, pre-set operational timing of 15 seconds
- Housings are suitable for 'through the wall' applications with a wall thickness of up to 165mm
- Anti-ligature fittings have a durable high chrome/stainless steel finish



Shower control C16556 (Touchpad C16559)

- In-cell sensors provide time flow controlled use of blended hot water
- Flow can be regulated at between 4 - 8 litres per minute, pre-set operational timing of 30 seconds
- Housings for touch pads are suitable for 'through the wall' applications with a wall thickness of up to 165mm
- Anti-ligature fittings have a durable high chrome/stainless steel finish



WC dual flush C16558 (Single Flush C16557)

- In-cell sensors mounted in anti-ligature housings allow time flow controlled dual or single flush
- Single flush: press touch pad for up to 0.5 seconds, double flush: press touch pad for more than 1 second
- Single flush flow is regulated at 3 litres, full flush flow at 6 litres
- Housings are suitable for 'through the wall' applications with a wall thickness of up to 165mm
- Anti-ligature fittings have a durable high chrome/laser-etched finish

Electronic Washroom Control Options

Douglas Delabie's electronic time flow control system achieves optimum BREEAM ratings for the following design features:

Features

- Integrated 4 (single cell) or 8 (2 cells) way electronic control with security lockout, mounted in inmate area service ducts
- A safe anti-scald water temperature is provided by a TMV3 thermostatic mixing valve (not featured) which is mounted in the service duct as part of a pre-fabricated manifold assembly. It has been independently tested and certified under the NHS Estates Model Engineering specification D08, and is also TMV3 approved
- Dual flush WC with security lockout in the event of deliberate abuse, controlled from the 4-station electronic control box
- Water flow control devices for basins (set at a rate of 6 litres per min) and showers (4 - 8 litres per min)



Control Box C16541 (1 cell 4 way) C16554 (2 cell 8 way)

- Designed to provide maximum flexibility and can be used in conjunction with either a touch pad or infrared system
- Supplied with four/eight sets of electrical cables (4m) with quick-fit connections (complete with security restraining clips) and solenoid valves
- For high security applications, an optional security lockout facility can be incorporated to prevent deliberate abuse, such as flooding or water wastage
- The operational timings for the 4 stations can be set at intervals of 7, 15, 30 or 45 sec
- If a station touch pad is operated more than 4 times in a 10 minute period or 10 times in 30 minutes, the channel to that station will 'lock out' the solenoid valve operation for 30 minutes - this is re-set automatically after 30 minutes or by interrupting the power supply
- Override feature allowing thermal or chemical system purge



Basin control C16542

- In-cell touch pads mounted in anti-ligature housings provide time flow controlled use of blended hot and cold water
- Flow is regulated at 6 litres per minutes, pre-set operational timing of 15 seconds
- Housings are suitable for 'through the wall' applications with a wall thickness of up to 165mm
- Anti-ligature fittings have a durable high chrome/stainless steel finish



Shower control C16543

- In-cell touch pads provide time flow controlled use of blended hot water
- Flow can be regulated at between 4 - 8 litres per minute, pre-set operational timing of 30 seconds
- Housings for touch pads are suitable for 'through the wall' applications with a wall thickness of up to 165mm
- Anti-ligature fittings have a durable high chrome/stainless steel finish



WC dual flush C16544

- In-cell touch pads mounted in anti-ligature housings allow time flow controlled dual or single flush
- Single flush: press touch pad for up to 0.5 seconds, double flush: press touch pad for more than 1 second
- Single flush flow is regulated at 3 litres, full flush flow at 6 litres
- Housings are suitable for 'through the wall' applications with a wall thickness of up to 165mm
- Anti-ligature fittings have a durable high chrome/laser-etched finish

Washroom Accessories for either Pneumatic or Electronic Controls



Ceiling-mounted Shower Head (anti-ligature) C16776

- Anti vandal/ligature fixed shower head
- Stainless steel finish
- Vandal-proof fixing



Wall-mounted shower head (anti-ligature) C16344

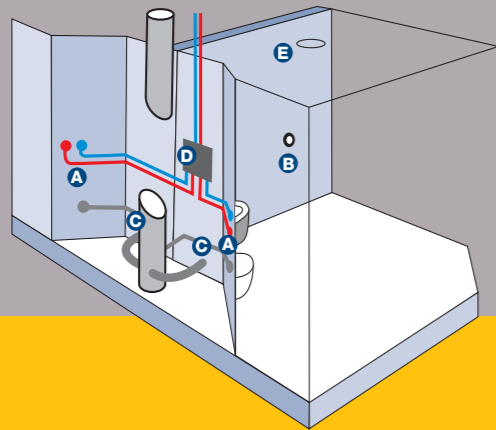
- Anti vandal/ligature fixed shower head
- Stainless steel finish
- Vandal-proof fixing



TMV Header Manifold C16781

- Installed in the service ducts and includes 22mm push-fit connections, lever action isolating ball valve and WRAS approved double check valves on the hot and cold water supplies (15mm on the non-potable water inlet connections)
- TMV3 mixing valve ensures safe mixed water at 41°C, located within the manifold assembly

A GUIDE TO TYPICAL CELL LAYOUTS



Pneumatic Washrooms

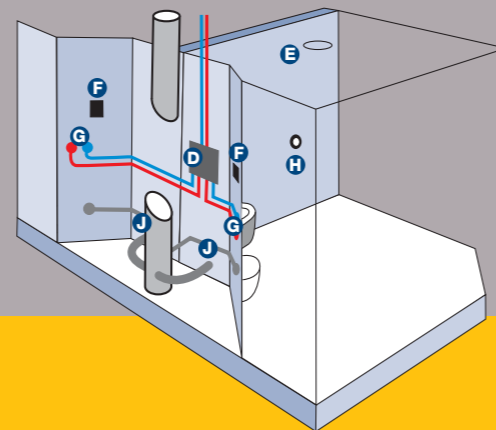
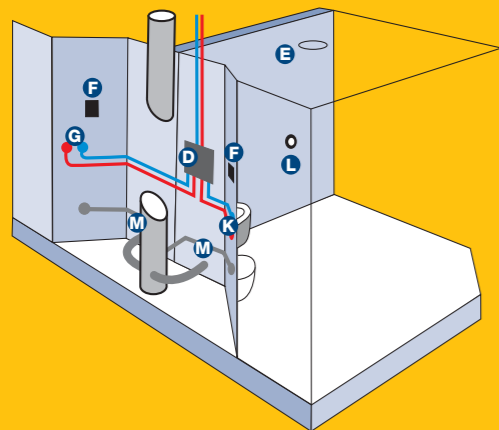
Douglas Delabie's pneumatic-based time flow control system is the ideal washroom solution within prison inmate areas to provide a safe, user friendly and anti-ligature control of showers, wash basins and WCs installed in individual cells, offering effective water control.

Key Features

- Anti-ligature 'through the wall' control solution
- Anti-Vandal – flow commences only after the button is released
- Water saving – adjustable run time & regulated flow rate 6 or 8 lpm
- Robust, durable construction
- Low maintenance – unique, dry 'pneumatic' timing system

PIR Washroom

As electronic washrooms but with PIR controls.



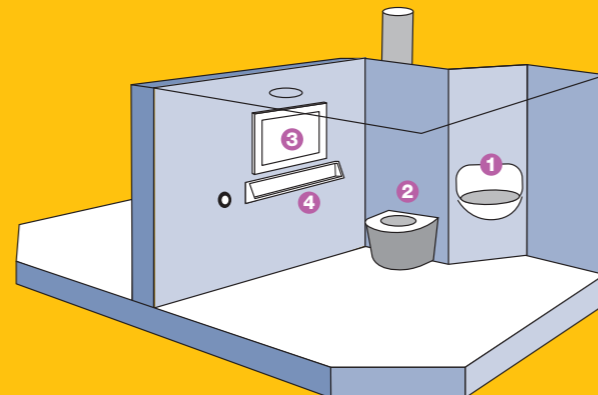
Electronic Washrooms

The Douglas Delabie 4 station electronic time flow control system achieves option BREEAM ratings using anti-ligature control solutions for wash basin, showers and WC's installed in individual cells. For high security applications, an optional security lock-out facility is incorporated to prevent deliberate abuse, such as flooding or water wastage.

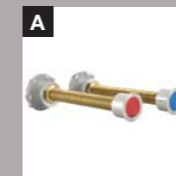
Key Features

- Anti ligature 'through the wall' control solution
- Electronic 4 channel time flow control with optional Security lock out
- Maximum Flexibility – Wash Basins, Showers, WC and Dual Flush WC
- Water saving – regulated flow rate 6 or 8 lpm
- Simple installation – plug and fit connections

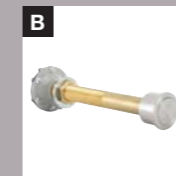
Sanitaryware Cell Layout



KEY



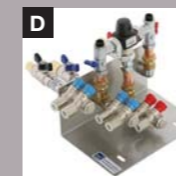
Pneumatic Basin Control C16537
• Wall thickness up to 195mm



Pneumatic Shower Control C16538
• Wall thickness up to 195mm



Pneumatic WC Dual Flush Control C16539
Single Flush Control C16540
• Wall thickness up to 195mm



TMV Header Manifold C16781
• TMV3 Thermostatic Mixing Valve supplied separately



Shower Head:
Wall Mounted C16344
• Wall thickness up to 235mm
Ceiling Mounted C16776
Ceiling Mounted Casting Box C16777



Control Box C16541 (4 way)
C16544 (8 way)
• 4/8 Way Control functionality
• Optional run timings 7, 15, 30, or 45 seconds



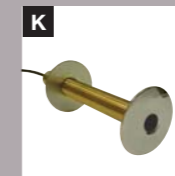
Electronic Basin Control C16542
• Wall thickness up to 165mm



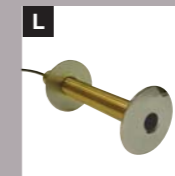
Electronic Shower Control C16543
• Wall thickness up to 165mm



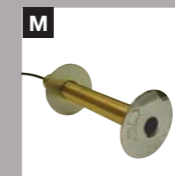
WC Dual Flush Control C16544
• Wall thickness up to 165mm



PIR Basin control C16555
• Wall thickness up to 165mm (in 211 3)



PIR Shower control C16556
• Wall thickness up to 165mm (in 211 3)
• Touchpad (C16559)



PIR Dual Flush control C16558
• Wall thickness up to 165mm (in 211 3)
• For Single Flush (C16557)



VRSG space saver basin - B91006
VRSG classic basin - B91007



VRSG WC Pan - B91003
VRSG WC Pan Corner - B91005



VRSG white polymer, anti-ligature, anti-vandal mirror B91000 / B91001



VRSG white polymer, anti-ligature, anti-vandal shelf unit - B91002

INSTALLATION OVERVIEW

Today's building designers and services contractors are increasingly searching for solutions to ecology and economy issues set out in the European Water Charter and that meets the stringent BREEAM requirements.

However, contractors are also faced with installing increasing sophisticated control solutions into an already busy service duct or void and delivering a high quality product that is easy to service and maintain at best value.

In conjunction with major Building Services contractors, Douglas Delabie have focussed on Buildability and developed a range of prefabricated solutions for the Secure Sector and other related applications that simplify and speeds installation; deliver a consistent, high quality solution; and one that reduces on-going service and maintenance.



Typical service void - Electronic Control



TMV Manifold with double check valves ...



Good planning simplifies future maintenance



Typical service void - Pneumatic Control



Single TMV Manifold provide water control to two cells



Prefabrication reduces on-site labour and instal time

PROJECT EXAMPLES



Secure

PFI HMP's Hull & Birmingham	Interserve
PFI HMP Peterborough & Bronzefield	AMEC
PFI Wythenshawe Hospital (Mental Health)	McAlpine/Emcor
St Georges Hospital (Mental Health)	Robertsons
Countess of Chester Hospital (Mental Health)	Axima /HE Simm
HMP Whitmoor, March	HMP Estates Department
HMP Addiewell, Bathgate	Interserve / SPIE Matthew Hall
HMP Belmarsh East MOJ projecT	Interserve / SPIE Matthew Hall
HMP Nottingham	EMCOR UK
Brook House Immigration Centre Gatwick	SPIE Matthew Hall
IRC Harmondsworth	SPIE Matthew Hall
HMP Dovegate and HMP Lowdham Grange	Skanska
HMP Coltishall	EMCOR UK



Healthcare

PFI Addenbrook Hospital, Cambridge	Haden Young
PFI Carlisle Hospital	AMEC
Stoke Mandeville Hospital, Aylesbury	Haden Young
Manchester Royal & Ormskirk Hospital	Various
Nuffield Hospital, Oxford -	Haden Young
Colchester General Hospital	
Watford General Hospital	
Maidstone Hospital	
Northampton MHU	Haden Young Modular Plus
Hope Hospital	Haden Young



Education

PFI Staffs Schools	Balfour Kilpatrick
PFI Schools - Glasgow	FES
PFI Schools - East Dunbartonshire	SPIE Matthew Hall
PFI Schools - Exeter	Haden Young
PFI Schools - Bristol	NG Bailey
Queens School - Watford	
Jo Richardson School - Barking	
University of Edinburgh - 920 Students accommodation	
University of Norwich - 600+ Students accommodation	



Sports & Fitness

Manchester United Melwood training facility
National Aquatic Centre, Cardiff
Bisham Abbey National Sports Centre, Bisham
Ricoh Stadium, Coventry City FC
Milton Keynes Stadium, MK Dons FC
Southampton FC, St. Mary's Stadium
O2 Arena (Millennium Dome)



Office & Retail

Projects including John Lewis, Tesco Stores and Sainsbury Stores
Terminal 5 Heathrow



OTHER APPLICATIONS

Due to the versatility of the VRSG Sanitaryware it is not just restricted for use in specialist secure situations but can also be used in a wide range of other applications and environments, potentially saving on ongoing refurbishment and maintenance costs. The following are just a few examples:



Pubs, Clubs and Restaurants
Shopping Centres
Food stores

Airports
Train Stations
Motorway Services
Public Toilets

Hospitals
Care Homes
Rehabilitation Centres
Asylum Centres

Holiday Parks / Camp Sites
Police Holding Cells
Hostels
Inner City Schools
Fire Stations
MOD



CASE STUDY – DOUGLAS DELABIE GETS SECURE WITH CELL CONTROLS

Douglas Delabie, the specialist supplier of thermostatic control solutions and accessories for the commercial market, continues to progress installations as part of the Government's emphasis on improving prison cell facilities.

The company has developed an integrated secure cell four-station electronic control system designed to meet the needs of the Secure Sector including mental health units, police holding cells and other secure units, and provides maximum flexibility.

The control box serves four stations allowing more efficient use of water for the VRSG WC, hot and cold supplies to the wash basin and / or shower and is operated by touch pad controls and has an integral transformer 230/12V supply. Installation is simple, the control box is a plug and fit solution using quick fit connections (with security restraining clips) to the Touchpad controller and solenoid valves (12V) and is supplied complete electric cables (four metre length)

In each of the four station, the timing can be set for individual use or the same application. For example, channel 1 – basin tap (hot), 15 seconds; channel 2 – basin tap (cold), 15 seconds; channel 3 – shower control, 30 seconds; channel 4 – WC dual flush control (double); or all four channels set for group shower or other application.

For high-risk applications, the controller incorporates an optional 'security lock-out' facility, which prevents deliberate abuse in police and high security holding cells. For example, nuisance operation such as deliberate flooding or water wastage. Should a touch pad be operated more than three times in a 10 minute period or 10 operations in any 30 minute span, that channel only will 'lock-out' for a period of 30 minutes.

If other channels are similarly operated, these channels too will 'lock-out' the solenoid valve operation for 30 minutes. Channels reset automatically after the 30 minute lock out period. The security 'lock-out' can be re-set by interrupting the control box's power supply. All channels are then functional.

The flexible system enables each of the four stations to be set for operational run time of 7, 15, 30 or 45 seconds. It is ideal for control of Hot and Cold basin taps, shower and WC control applications including WC single/dual flush, and can be used with Douglas Delabie direct flush valves, eliminating the need for WC cisterns.

Bob Purdom, the company's commercial director, says: "Designed specifically for secure environments like prisons, and mental health, the control system also has wide applications as a multi channel control for banks of showers or basins in schools, colleges, bus and rail stations, or most public buildings."

CONTACTS

With over 480 branches and 38 newly-created commercial 'Centers of Excellence' located in Plumb Centers across the UK you will always find support where you need it. To find your nearest Plumb Center or for more information please contact us on 0870 16 22 557 or visit our website www.plumbcenter.co.uk. The dedicated commercial 'Centers of Excellence' are as follows:

England	Address	Tel: Number	Fax: Number
Birkenhead	Priory Ind Est, Church Street, Birkenhead CH41 5JA	0151 647 9901	0151 649 9305
Birmingham	Unit 4, Bromford Central, Bromford, Birmingham B8 2SB	0121 326 2942	0121 326 4997
Blackpool	Units 1-2 Canberra Court, Amy Johnson Way, Blackpool Business Park, Squires Gate Lane, Blackpool, Lancs FY4 2FD	01253 400 222	01253 347 385
Botley	Botley Works, North Hinksey Lane, Botley, Oxfordshire OX2 0LS	01865 724 641	01865 793 361
Bournemouth	855 Ringwood Road, West Howe, Bournemouth, Dorset BH11 8NE	01202 574 996	01202 580 901
Bradford	Unit 2c Revival Ind Est, Wakefield Road, Bradford BD4 7AQ	01274 736 111	01274 736 222
Bristol	Unit 11, Montpelier Central Trading Est., Station Road, Montpelier, Bristol BS6 5EE	0117 944 5049	0117 944 1943
Cambridge	Unit 20 Coral Park Estate, Coldhams Lane, Cambridge CB1 3EA	01223 354 272	01223 313 159
Canterbury	Unit 2, Wincheap Industrial Estate, Canterbury, Kent CT1 3RB	01227 455 275	01227 472 908
Carlisle	Unit 2, Currock Road, Carlisle, Cumbria CA2 5AE	01228 529 345	01228 810 034
Derby	15 Ashlyn Road, West Meadows Ind Est, Derby DE21 6XE	01332 361 412	01332 340 133
Eastleigh	Twyford Road, Eastleigh, Hants SO50 4HB	02380 620 044	02380 642 848
Epsom	Units 1 And 2, Felstead Road, Epsom, Surrey KT19 9XS	01372 754 900	01372 754 901
Exeter	Alphinbrook Road, Marsh Barton Trd Est, Exeter EX2 8QF	01392 257 131	01392 253 234
Gloucester	Unit 7 Central Trading Estate, Cole Avenue, Gloucester GL2 5HA	01452 301 501	01452 380 749
Hove	Unit 2 Clarkes Ind Est, Newtown Road, Hove, East Sussex BN3 7BA	01273 324 352	01273 208 482
Kingston Upon Hull	Stone Ferry Road, Kingston Upon Hull, East Yorkshire HU7 0BE	01482 878 900	01482 878 688
Leeds	1 Benson Street, Leeds LS7 1AG	0113 243 9711	0113 234 0223
Lincoln	Sunningdale Trd Est, Dixon Street, Lincoln LN6 7XD	01522 526 125	01522 539 905
London	Unit A1, Eastern Approach, Alfreds Way, Barking, London IG11 0AS	0208 532 7930	0208 594 6614
Manchester	Unit 1, Harp Trading Estate, Trafford Park, Manchester M17 1SR	0161 786 0960	0161 877 9152
Middlesbrough	Telford Road, Off South Bank Road, Middlesbrough TS3 8BL	01642 233 633	01642 224 395
Newcastle-Upon-Tyne	Bellway Industrial Estate, Whitley Road, Longbenton, Newcastle-Upon-Tyne NE12 9SW	0191 266 4711	0191 215 0156
Northampton	67 St James Mill Road, St James Mill Road Ind Est, Northampton NN5 5JP	01604 583 393	01604 750 103
Plymouth	Units A1 - A4 Plymouth Trade Par, Macadam Road, Cattedown, Plymouth, Devon PL4 0RW	01752 672 345	01752 255 835
Sheffield	7 Manton Street, Sheffield, South Yorkshire S2 4BA	0114 276 9191	0114 272 6418
Sidcup	Units 3+4+5 Five Arches Bus Esta, Maidstone Road, Sidcup, Kent DA14 5AE	0208 308 4280	0208 300 3453
Sunderland	Unit 2 Leechmere Estate, Grangetown, Sunderland, Tyne & Wear SR2 9UA	0191 521 1000	0191 523 7387
Truro	Unit 5 Heron Way, Newham, Truro, Cornwall TR1 2XN	01872 275 551	01872 223 851
Warrington	Unit 5b New Cut Lane Ind Est, Woolston, Warrington, Cheshire WA1 4AG	01925 818 614	01925 820 141
West Drayton	Unit 3/4 Zodiac Park, High Road, West Drayton, Middlesex UB8 2GU	01895 439 888	01895 439 673
Wolverhampton	34 Birmingham Road, Wolverhampton, West Midlands WV2 3LT	01902 455 726	01902 453 847
York	James Street, York YO10 3DW	01904 414 929	01904 430 884

Scotland	Address	Telephone	Facsimile
Aberdeen	Plumbcenter Unit 3 Hareness Park, Hareness Circle Altens Ind Est, Aberdeen AB12 3QY	01224 873 316	01224 874 042
Edinburgh	Unit 26, Hawkhill Avenue, Edinburgh EH7 6BU	01316 613 161	01316 567 271
Dundee	Units 1-4 Faraday Street, Dryburgh Industrial Estate, Dundee DD2 3QQ	01382 811 178	01382 810 468
Glasgow	133 Lancefield Street, Glasgow G3 8HZ	0141 248 3511	0141 248 3767

Wales	Address	Telephone	Facsimile
Cardiff	Units 12a - 12d, Cheviot Close, Cardiff Industrial Park, Llanishen, Cardiff CF14 5JA	02920 763 770	02920 765 462

REGIONAL SALES AND ESTIMATING CONTACTS

Each 'Center of Excellence' will have a dedicated commercial stock holding and specialist 'commercial champions' on hand to provide commercial plumbers and installers with expert information and advice. This will allow commercial plumbing companies and installers reach further into the commercial market to find everything they need under one roof. In addition to the specialist centers, there will also be a team of experienced estimators located across the UK, who will be available to provide technical and practical advice to Plumb Centers' commercial customers, as well as prepare quotations for tendering purposes.

Area	Tel: Number	Fax: Number
Devon, Cornwall, West Dorset, Wiltshire, West & South Wales		
Unit C, Plymouth Trade Park, Plymouth, Devon PL4 0RW	01752 604 410	01752 604 351
Surrey, Sussex, South London, Kent, Hampshire, Channel Islands		
Plumb Center Regional Office, Unit 2 Clarkes Ind Estate, Newtown Road, Hove, East Sussex BN3 7BA	01273 770 342	01273 732 561
Norfolk, Suffolk, Cambridgeshire, North, East & West London, Essex, Bedfordshire, Berkshire, Buckinghamshire, Hertfordshire		
Wolseley UK. Plumb Center Regional Office, 1st Floor Front Office, Marston Gate Distribution Centre, Badgers Rise, Near Ridgmont, Bedfordshire MK43 0YL	01525 262 022	01525 262 040
Lincolnshire, Derbyshire, Nottinghamshire, Warwickshire, Leicestershire, Oxfordshire, Gloucestershire, Northants, Berkshire, Herefordshire		
Wolseley UK. The Wolseley Center, Harrison Way, Leamington Spa, Warwickshire CV31 3HH	01926 705 688	08709 016 672
North West, North Wales, West Midlands		
Plumb Center, Unit 5B, New Cut Lane Industrial Estate, Wollston, Warrington WA1 4AG	01925 838 754	01925 820 688
Plumb Center, Sutton Street, Chesterton, Newcastle Under Lyme, Staffordshire ST5 7JB	01782 565 103	01782 564 796
Tyne & Wear, Durham, Teeside, Yorkshire		
Wolseley UK. PO Box 21, Boroughbridge Road, Ripon, North Yorkshire HG4 1SL	01765 694 463	0870 901 6670
Plumb Center. Bell Way Industrial Estate, Whitley Road, Longbenton, Newcastle upon Tyne NE12 9SW	0191 266 4723	0191 259 9697
Scotland, Cumbria		
Plumb Center. Units 1-4, Faraday Street, Dryburgh Industrial Estate, Dundee DD2 3QQ	01382 817 176 01382 817 186	01382 489 600

For further information telephone 0870 16 22 557 or
visit our website at www.plumbcenter.co.uk

Whilst every care has been taken to ensure that the information included in this document was accurate at the time of printing, we reserve the right to change specifications at any time. The photographs reproduced in this publication are within the constraints of the printing process and are NOT to be used for matching purposes. E&OE.

a **WOLSELEY** company

Ref:

